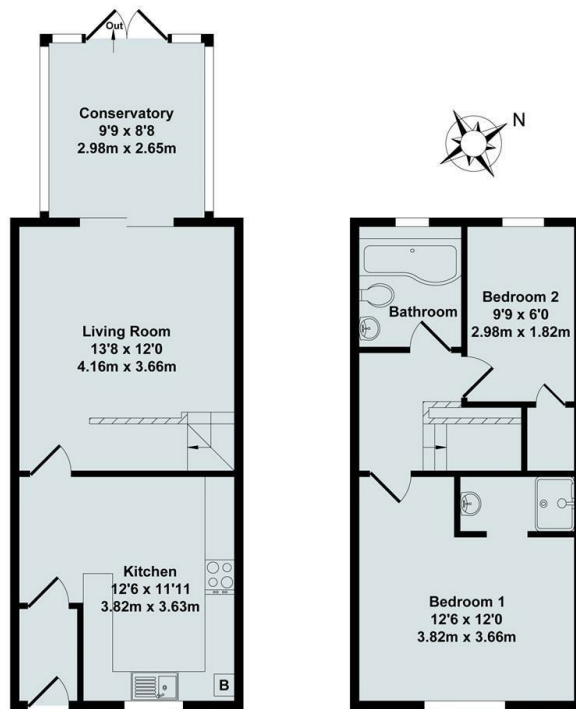




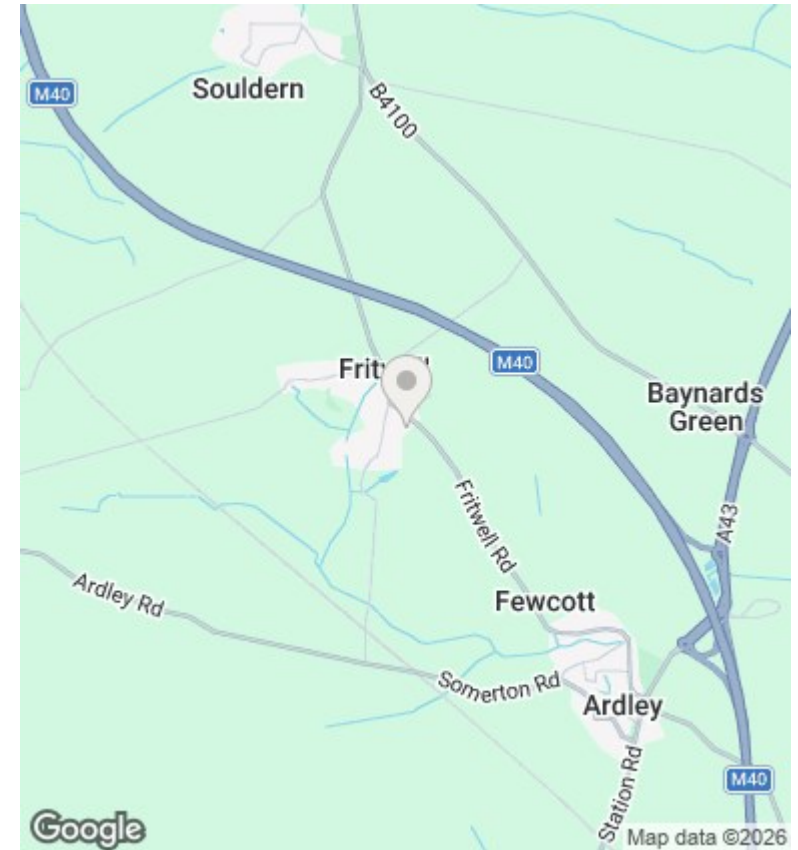
6 Hodgson Close, Fritwell, Bicester, OX27 7QB

£1,400 - 5th June 2026.

- Two bedroom end terrace house
- Kitchen appliances
- Off street parking for 1 car
- Calor gas from central tank to road, mains electricity and water
- Unfurnished
- Gas central heating
- EPC rating D
- Ensuite shower to master bedroom
- Rear Garden
- Council Tax Band C



Ground Floor
 First Floor
 Total Approx. Floor Area 725 Sq.Ft. (67.40 Sq.M.)
 All items illustrated on this plan are included in the "Total Approx Floor Area"



Directions

Viewings

Viewings by arrangement only. Call 01865 515900 to make an appointment.

Council Tax Band

C

EPC Rating:

D

| Energy Efficiency Rating | | Current | Potential |
|--|---|-------------------------|-----------|
| <i>Very energy efficient - lower running costs</i> | | | |
| (92 plus) | A | | |
| (81-91) | B | | 83 |
| (69-80) | C | | |
| (55-68) | D | 64 | |
| (39-54) | E | | |
| (21-38) | F | | |
| (1-20) | G | | |
| <i>Not energy efficient - higher running costs</i> | | | |
| England & Wales | | EU Directive 2002/91/EC | |